


Tourism and Outdoor Recreation at Wisconsin Sea Grant



Natalie Chin

Climate and Tourism Outreach Specialist

nchin5@aqua.wisc.edu

Wisconsin Sea Grant
promotes the
sustainable use of
Great Lakes
resources
through research,
education and
outreach.





What do I do related to tourism?



WISCONSIN'S CHANGING CLIMATE

Impacts and solutions for a warmer climate

2021 *Assessment Report*
The second report of the Wisconsin
Initiative on Climate Change Impacts



Find it online:
<https://wicci.wisc.edu>





[HOME](#) / [TOURISM AND OUTDOOR RECREATION WORKING GROUP](#)

TOURISM AND OUTDOOR RECREATION WORKING GROUP

<https://wicci.wisc.edu/tourism-and-outdoor-recreation-working-group/>

How do we support **community-directed** **climate action?**



Move your community forward with the Lake Superior Climate Champions program

All across Lake Superior's coastal counties, we feel the impacts of climate change firsthand. Climate change is a reality for communities in Wisconsin's Lake Superior basin. Warming waters and winters are changing our lifeways and livelihoods. Changing storm and flood patterns bring costly destruction.

As a community leader in the region, you may be one of the many decision-makers motivated to act on climate issues to protect the place where you live.





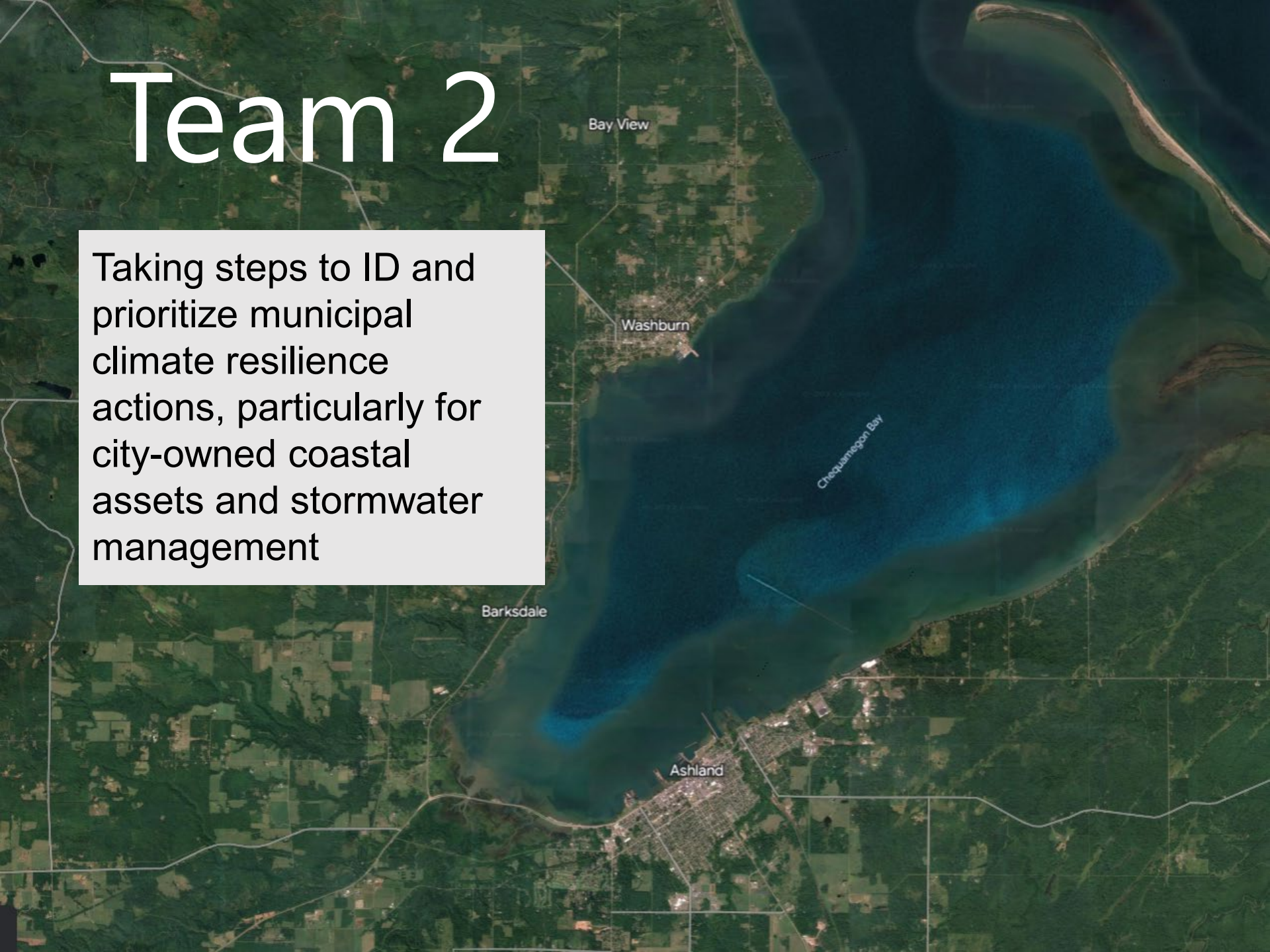
Team 1

Needs a system to document maintenance work when **this** happens

0072072012

Team 2

Taking steps to ID and prioritize municipal climate resilience actions, particularly for city-owned coastal assets and stormwater management



IRB #: 2021-0920

DATE APPROVED: 7/13/2021

DATE EXPIRES: 7/13/2024



TRAVEL WISCONSIN.COM

Help Make the Apostle Islands National Lakeshore Safer

Anyone over 18 can help by completing this brief online survey at bit.ly/3PU5fPZ

Our team of researchers is working to understand what types of water safety information are useful to visitors to the Apostle Islands National Lakeshore. You do not have to have visited the Apostle Islands National Lakeshore to participate in this survey, but you must be 18 years or older.

If you have any questions or concerns, please contact Dr. Natalie Chin, nchin5@aqu.wisc.edu, 715-399-4083.



College of Engineering
UNIVERSITY OF WISCONSIN-MADISON



50
Sea Grant
UNIVERSITY OF WISCONSIN



WISCONSIN COASTAL
MANAGEMENT PROGRAM

Register at: https://z.umn.edu/ID_Hotspots

Identifying Drowning Hotspots in the St. Louis River Estuary

About this Workshop

The goal of this workshop is to gather input on next steps for the "Identifying Drowning Hotspots in the St. Louis River Estuary" project. The workshop will take place in person with an option to join remotely via Zoom Meeting. To register, please go to: https://z.umn.edu/ID_Hotspots.



Date and Place

February 22, 2023

1 p.m. to 3 p.m. CST

Confluence Room, Lake Superior Reserve
3 Marina Drive, Superior, WI 54880
or join via Zoom Meeting

For more information on the project or this workshop, please contact:

✉ Kelsey Prihoda, Minnesota Sea Grant
priho011@d.umn.edu

✉ Natalie Chin, Wisconsin Sea Grant
nchin5@aqu.wisc.edu

This project is being jointly funded by the Minnesota Lake Superior Coastal Program and the Wisconsin Coastal Management Program.

Workshop Objectives



Introduce the Project

Get to know the project's goals, objectives, and methods.



Gather Feedback

Tell us about past water safety incidents within the St. Louis River Estuary.



Recruit Volunteers

Learn how this project is involving the community and how you can help.

[Our Work](#) > [Focus Areas](#) > [Water Quality](#) > Virtual Beach

Virtual Beach

Virtual Beach is a [free software program](#) for Windows that enables coastal beach managers, public health professionals, and applied researchers to efficiently develop and operate water-quality models to inform beach-specific decisions on:

- Whether to issue (or lift) swim advisories/closures on a given day
- What type of lab test (if any) to run on a given day
- Where and how to prioritize long-term remediation efforts

What is Virtual Beach?

Beaches provide coastal communities with substantial economic, social and health benefits. Along the U.S. Great Lakes coast, an estimated 8 million people visit beaches each year. Unfortunately, some information commonly used to evaluate water quality, communicate health risks and prioritize remediation efforts are *24 hours old*, meaning swimmers can be swimming when conditions are not safe. Conversely, swimmers may be kept out of the water when no current problems exist. Virtual Beach (VB) addresses these shortcomings.

[Read more...](#)



May 2023

SAT
6

May 6, 2023 @ 9:30 am - 11:30 am CDT

Everyone Can Bird: Spring Arrivals at Boy Scout Landing

Boy Scout Public Water Access 11 Commonwealth Avenue, Duluth, MN

Join the Lake Superior Reserve, Hawk Ridge and the Friends of the Lake Superior Reserve for a free, bird-focused morning as part of an accessible birding series. We welcome people of all ages and ability levels to attend this accessible birding event at Boy Scout Landing in Duluth. Observe waterfowl from the comfort of the landing with fellow bird ... [Read More](#)

Free





2023 National Extension Tourism Conference

Envisioning the Future of Extension in Tourism

SAVE THE DATE

Milwaukee, WI
September 24 — 27

Hosted by Wisconsin Sea Grant
go.wisc.edu/075h11



NATIONAL EXTENSION
TOURISM NETWORK

Thank you!

Contact Information

Natalie Chin

Climate and Tourism Outreach Specialist

nchin5@aqua.wisc.edu